

Performance and productivity

- Best load capacities
- Rear axle lock and tilt corrector in standard
- Flow Sharing in standard enabling a simultaneous and proportional control of 4 movements

Powerful and robust

- High strength monoblock chassis
- Rough terrain capacities
- Hydrostatic transmission and inching pedal

Comfort and ergonomomy

- Driving position reducing fatigue at work
- Load Moment Indicator (LMI) easy to read including automatic cut off dangerous movements
- High safety cab
- Smart control 4 in 1 Joystick



HTL 5210



TELEHANDLER

Haulotte

GROUP

PERFORMANCES

| | |
|------------------------------|---------|
| Maximum lift capacity | 5200 kg |
| Lift capacity to full height | 5200 kg |
| Lift capacity at full reach | 3500 kg |
| Maximum fork height | 10 m |
| Reach at maximum fork height | 0.3 m |
| Maximum forward reach | 5.7 m |



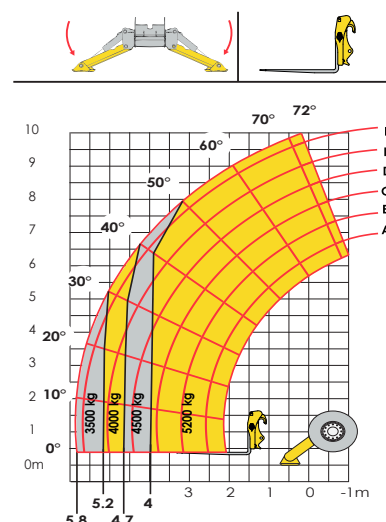
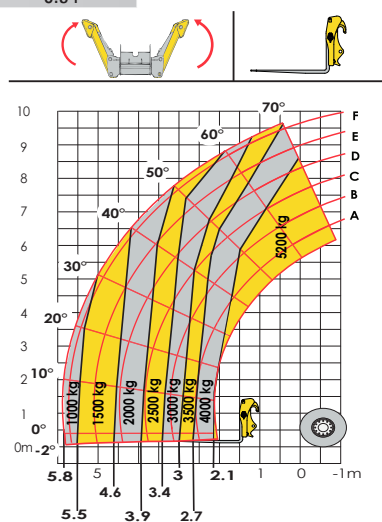
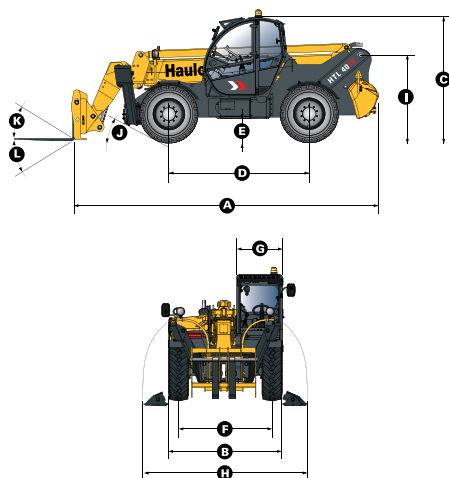
DIMENSIONS

| | |
|---|-----------|
| A Length | 6.28 m |
| B Width | 2.43 m |
| C Height | 2.6 m |
| D Wheelbase | 2.89 m |
| E Ground clearance | 50 cm |
| F Track width | 2 m |
| G Cab width | 0.96 m |
| H Overall width - stabilizers down | 3.34 m |
| I Height to high boom pivot | 1.75 m |
| J Approach angle | 29 ° |
| K Upper rotation of forks | 18 ° |
| L Lower rotation of forks | 122 ° |
| Turning radius (outside wheels) | 4,5 |
| Weight with forks | 10810 kg |
| Tyres type | 400/80-24 |



ENGINE

| Engine model | PERKINS TIER III | PERKINS TIER IV |
|---------------------|----------------------|----------------------|
| Engine Capacity | 4400 cm ³ | 3400 cm ³ |
| Engine power output | 70kW @ 2300rpm | 83kW @ 2200rpm |
| Engine torque | 392Nm @ 1400rpm | 450Nm @ 1400rpm |
| Transmission type | Hydrostatic | |
| Fuel tank | 130 l | 130 l |
| Engine oil | 7 l | 9.5 l |



STANDARD EQUIPMENT

- Backlighte e-tronic dashboard
- Hydrostatic transmission
- 4 wheels drive and steer
- Simultaneous and proportional controls for boom / telescopic arm / excavation and accessories movements
- Safety valves on hydraulic jacks
- Auxiliary hydraulic system
- Cut-off of dangerous movements when overloaded
- Tilt corrector: +/- 10°
- ROPS/FOPS cabin with heating and ventilation
- Hydraulic rear axle locking

OPTIONS AND ACCESSORIES

- Winches
- Jibs
- Forks
- Buckets
- Air conditioning
- Working lights
- Metal windscreen protector (FOPS)
- Rear camera
- Reverse fan

